

MEDICAL RADIATION SCIENCES



Congratulations on your admission!

Welcome!

Congratulations on your Admission to the Medical Radiation Sciences Program. We're excited to welcome you to our community and we're ready to support you during your studies.



Catherine Ladhani
Chair, Radiation Therapy
Michener



Cathryne Palmer
MRS Program Director
U of T



Susan Weltz
Chair, Imaging
Michener



Kieng Tan
MRS Academic Coordinator
U of T

MRS Overview



MRS has three streams:

- > Nuclear Medicine & Molecular Imaging Technology
- > Radiological Technology
- > Radiation Therapy

MRS is a joint degree/diploma program that was the first of its kind in Canada!

Graduates receive two credentials:

- > BSc (Medical Radiation Sciences) - University of Toronto
- > Advanced Diploma of Health Sciences - The Michener Institute of Education at UHN

MRS is a 3 year program consisting of 8 consecutive semesters:

- > YEAR 1: Fall (Sept-Dec), Winter (Jan-April), Summer (May-July)
- > YEAR 2: Fall (Sept-Dec), Winter (Jan-April), Summer (May-August)
- > YEAR 3: Fall (Sept-Dec), Winter (Jan-April)

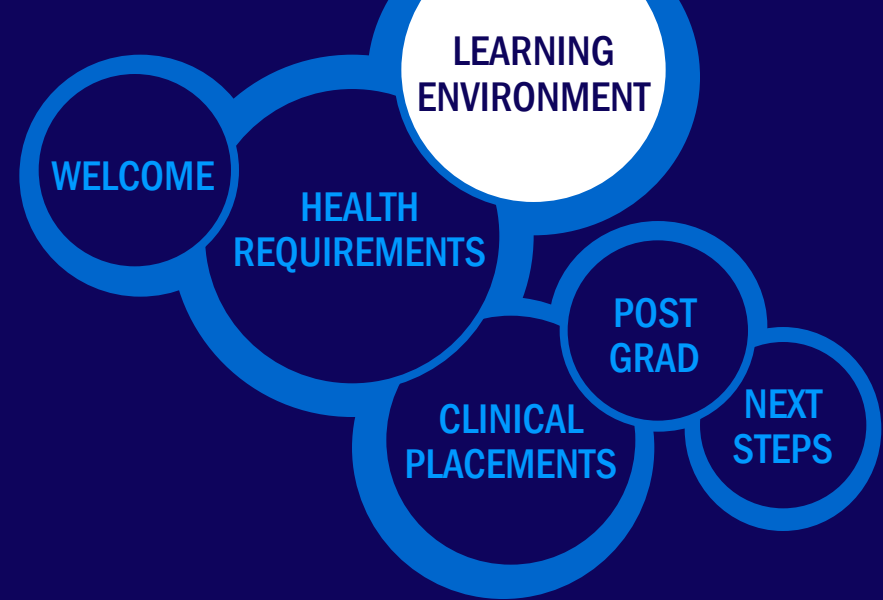
Learning Environment

As a professional program, the MRS curriculum has been designed to provide you with an essential combination of academic skills and hands-on training.



LEARNING ENVIRONMENT

Program Delivery

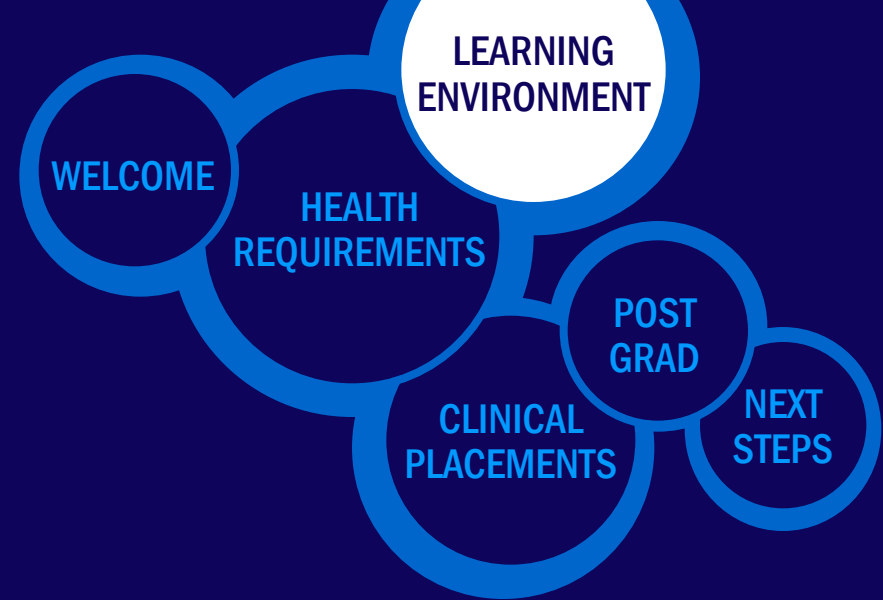


MRS courses take place on both the U of T (St. George) and Michener campuses and you'll benefit from a variety of learning situations: traditional lecture based classes, online classes, interactive small discussion groups and hands-on learning opportunities with extensive radiation therapy and imaging equipment. Classes are small and you'll get to know your fellow students as well as your professors.

Some courses are common across all three disciplines (anatomy, patient care, physiology, etc.) while other courses are discipline-specific. Each discipline stream includes interprofessional, clinical simulation and clinical courses as well as approximately 42 weeks of practical clinical experience. Aside from Selective/Subspecialty course options, the curriculum is predetermined and sequenced to ensure you'll graduate with a complete skill-set.

LEARNING ENVIRONMENT

Essential Skills

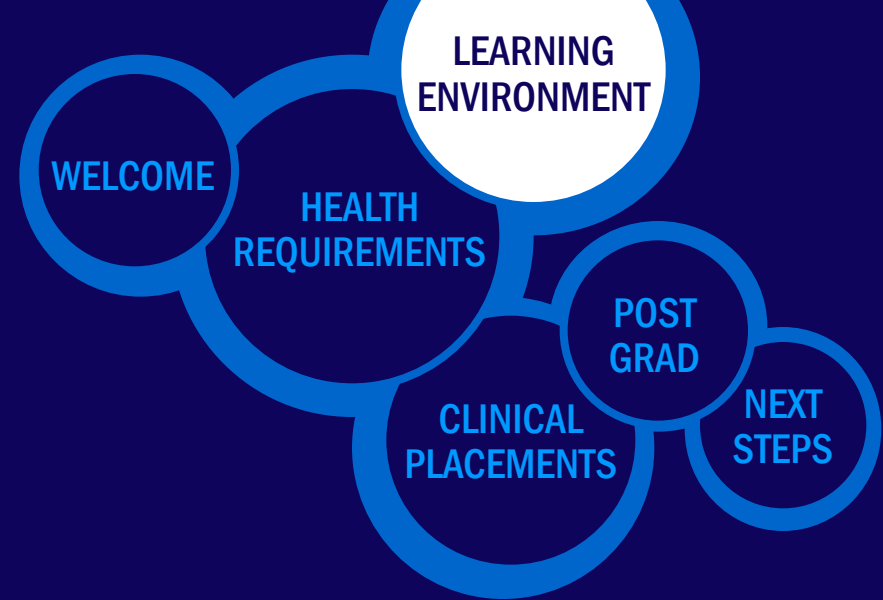


The MRS Program is responsible to the public to provide a program of study whereby graduates have the knowledge, skills, professional behaviours and attitudes necessary to enter the practice of medical radiation sciences.

Further to the provincial legislative and regulatory requirements for registration as a medical radiation technologist, students in the MRS Program must possess the cognitive, communication, sensory, motor and social skills necessary to educate and counsel patients, and competently achieve technical procedures in a reasonable time frame while ensuring patient safety.

LEARNING ENVIRONMENT

Essential Skills



Observation

A student must be able to accurately observe a patient to acquire visual, auditory and tactile information.

Communication

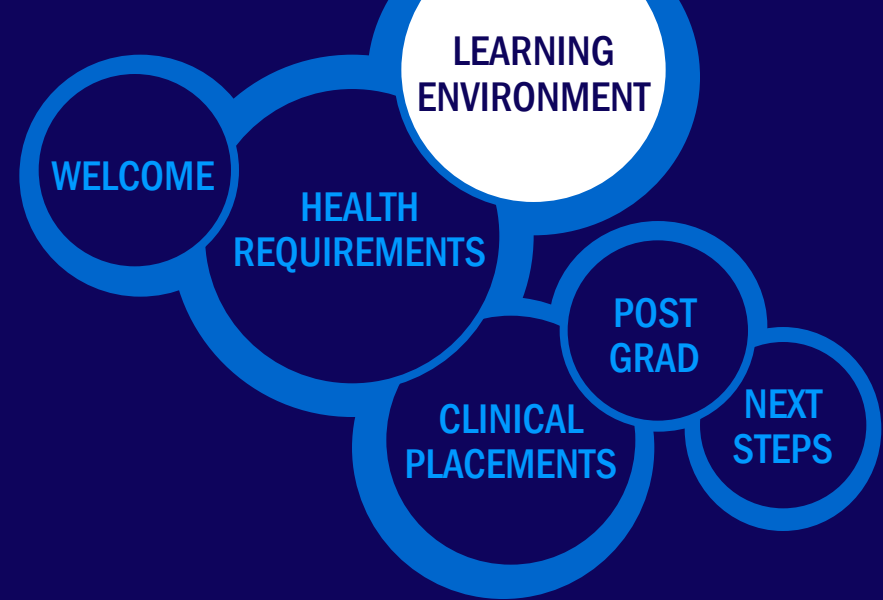
A student must be able to communicate effectively and sensitively with patient, family and other members of the health care team. A student must also be able to summarize coherently the patient's condition, both verbally and in writing.

Psychomotor

A student must demonstrate sufficient psychomotor function to safely operate equipment/accessories and execute movements to provide general and emergency medical care to patients.

LEARNING ENVIRONMENT

Essential Skills



Intellectual-Conceptual, Integrative and Quantitative Abilities

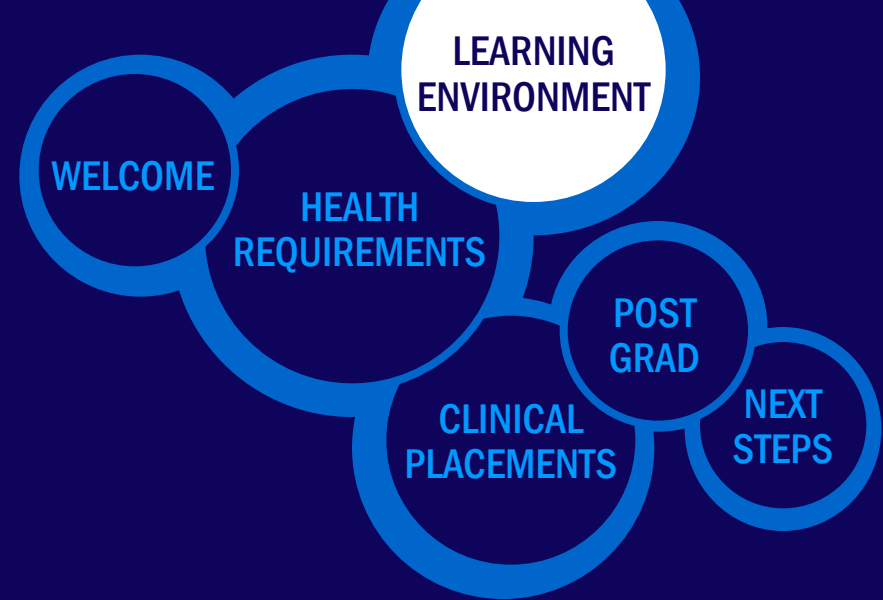
A student must demonstrate the cognitive skills necessary to measure, calculate, analyze, integrate and synthesize information applicable to the role. In addition, the student must be able to comprehend two and three dimensional relationships. All of these problem-solving activities must be completed in a timely fashion.

Behavioural and Social Attributes

Compassion, integrity and interpersonal skills are all personal qualities expected of a student. A student is required to show respect, tolerance for others and dedication to interprofessional teamwork values.

LEARNING ENVIRONMENT

Student Support



Accommodations for Disabilities

Reasonable accommodations will be made to facilitate each student's progress and success. Students who require accommodations must register with Accessibility Services at U of T as soon as possible (and before classes begin). Accessibility Services respects your privacy and will not disclose personal information without your written consent.

Learn more at: <http://accessibility.utoronto.ca/>

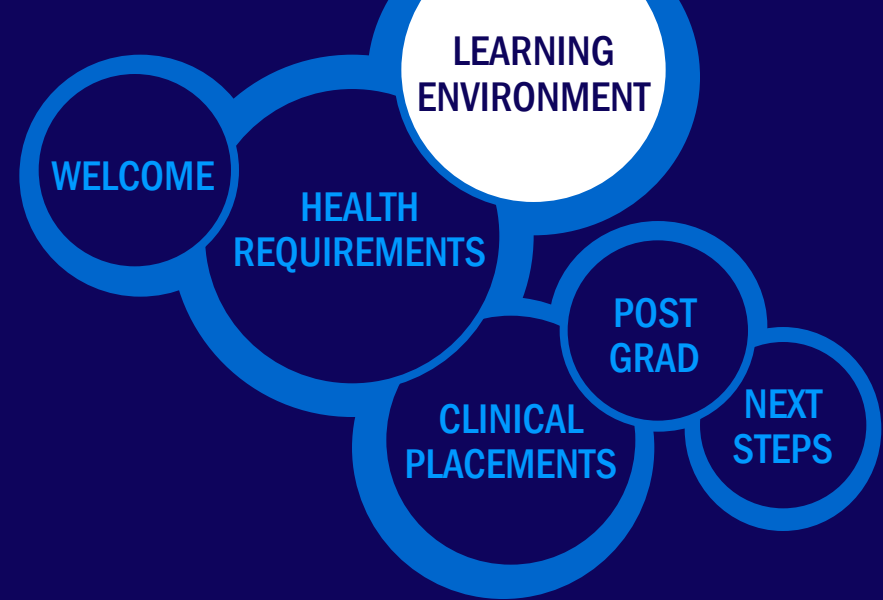
Office of Health Professions Student Affairs (OHPSA)

Students requiring advice and/or support are encouraged to seek the assistance of the Office of Health Professions Student Affairs (OHPSA) as soon as questions arise. OHPSA provides confidential Personal, Career, and Learning Skills Counselling.

Learn more at: <http://www.ohpsa.utoronto.ca/>

LEARNING ENVIRONMENT

Getting Involved



Campus Life

As an MRS student you'll have access to hundreds of clubs and students groups along with academic resources, support services and recreational facilities on both U of T and Michener campuses.

U of T Services: <https://www.studentlife.utoronto.ca>

U of T Clubs and Student Groups: <https://ulife.utoronto.ca/>

Michener's Student Success Network: <http://michener.ca/students/student-success-network/>

MRS Society (MRSS)

MRSS organizes a wide variety of student events and is concerned with both academic and non-academic aspects of student life. The Society promotes interprofessionalism among healthcare students and professionals through community involvement and participation.

For more information contact: mrssociety@michener.ca

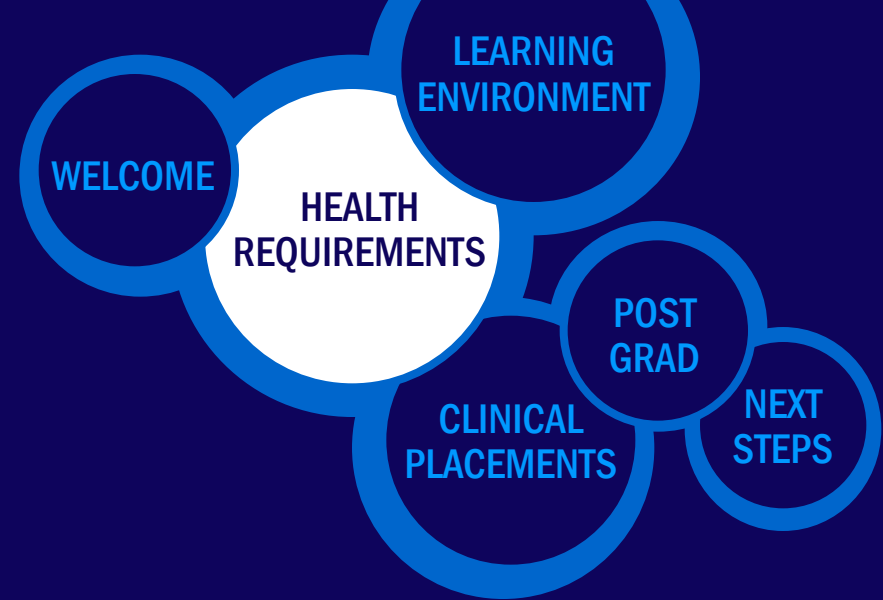


Health Requirements

To ensure the safety and well-being of everyone involved in the clinical environment, MRS students must meet the profession's health and safety standards and requirements.

HEALTH REQUIREMENTS

Student Health & VSC



Before you may participate in the mandatory clinical placements the Public Hospital Act requires that you have (and maintain) immunizations, CPR / First Aid certification and that you undergo mask-fitting. (Please note that mask-fitting requires that each student is clean-shaven.) You are also required to submit a Vulnerable Sector Check (VSC).

The deadline to submit many of the related documents is August 31, so be sure to start the process as soon as you have accepted your offer of admission.

Learn more at: <http://michener.ca/students/student-success-network/health-requirements/>

Clinical Placements

By accepting your offer of admission you accept an assigned clinical placement. Your placement site may not be your first choice and MRS affiliated clinical sites are subject to change.



CLINICAL PLACEMENTS

Nuclear Medicine



Nuclear Medicine & Molecular Imaging Technology is a provincial program with clinical sites across the province.

Current partners include:

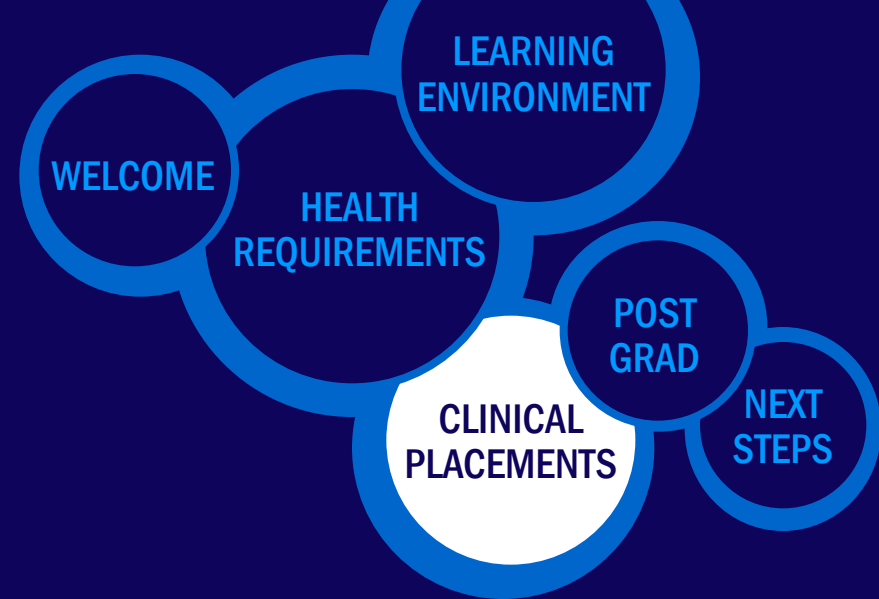
- > Hamilton Health Sciences (Hamilton)
- > Hospital for Sick Children (Toronto)
- > Humber River Hospital (Toronto)
- > Lakeridge Health (Oshawa)
- > London Health Sciences (London)
- > Markham Stouffville Hospital (Markham)
- > Mount Sinai Hospital (Toronto)
- > North York General Hospital (Toronto)
- > Ottawa Civic Hospital (Ottawa)
- > Southlake Regional (Newmarket)
- > Sunnybrook (Toronto)
- > St. Joseph's (Toronto)
- > St. Mary's (Kitchener)
- > St. Mike's (Toronto)
- > Thunder Bay Regional Health Sciences Centre (Thunder Bay)
- > University Health Network (Toronto)
- > William Osler (Brampton)

Please Note!

We cannot guarantee a placement in your first-choice site. Clinical sites are subject to change.

CLINICAL PLACEMENTS

Radiological Technology



Radiological Technology is affiliated with clinical sites primarily across the Greater Toronto Area.

Current partners include:

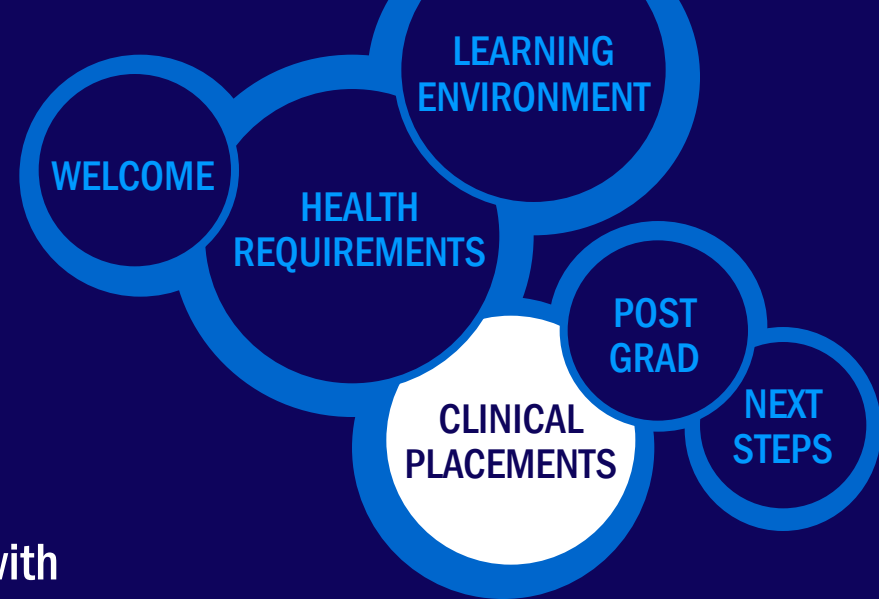
- > Hospital for Sick Children (Toronto)
- > Humber River Hospital (Toronto)
- > Lakeridge Health (Oshawa)
- > Mackenzie Health (Richmond Hill)
- > Markham Stouffville Hospital (Markham)
- > Mount Sinai Hospital (Toronto)
- > North York General Hospital (Toronto)
- > Peterborough Regional Health Centre (Peterborough)
- > Royal Victoria Regional Health Centre (Barrie)
- > Rouge Valley Health (Ajax)
- > Rouge Valley Health (Toronto)
- > The Scarborough Hospital (Toronto)
- > St. Joseph's Health Centre (Toronto)
- > St. Michael's Hospital (Toronto)
- > Southlake Regional Health Centre (Newmarket)
- > Sunnybrook Health Sciences Centre (Toronto)
- > Toronto East General Hospital (Toronto)
- > University Health Network (Toronto)

Please Note!

We cannot guarantee a placement in your first-choice site. Clinical sites are subject to change.

CLINICAL PLACEMENTS

Radiation Therapy



Radiation Therapy is a provincial program with clinical sites across the province.

Current partner locations include:

- > Credit Valley Hospital (Mississauga)
- > Sunnybrook Health Sciences Centre (Toronto)
- > University Health Network / Princess Margaret Cancer Centre (Toronto)
- > Southlake Regional Health Centre (Newmarket)
- > Lakeridge Health (Oshawa)
- > Kingston General Hospital (Kingston)
- > The Ottawa Hospital (Ottawa)
- > Thunder Bay Regional Health Sciences Centre (Thunder Bay)

Please Note!

We cannot guarantee a placement in your first-choice site. Clinical sites are subject to change.

Post Grad Professional Certification



Completing the MRS Program is the first step towards professional certification as a Medical Radiation Technologist.

Graduates from an accredited program MUST pass the national certification examination (CAMRT), which is an online multiple choice competency based examination, in order to pursue a career as a medical radiation technologist (MRT).

The CAMRT is the national professional association and certifying body for radiological, nuclear medicine and magnetic resonance imaging technologists and radiation therapists. Established in 1942, the CAMRT today represents over 12,000 members.

Learn more at: <http://camrt.ca>

Working in Ontario



In order to practice in the province of Ontario you must be registered with the College of Medical Radiation Technologists of Ontario (CMRTO). CMRTO members must not have been convicted of/or be under investigation for a criminal offence.

CMRTO members are asked to self-declare that your past and present conduct must afford reasonable grounds for the belief that you:

- > will practise medical radiation technology with decency, honesty and integrity, and in accordance with the law,
- > do not have any quality or characteristic, including any physical or mental condition or disorder, that could affect your ability to practise medical radiation technology in a safe manner, and
- > will display an appropriate professional attitude

Learn more at: <https://www.cmrto.org/>

Next Steps

Now that you're aware of some of the unique features of the MRS Program, it's time to accept your offer and prepare for September!



Read up on the MRS Program

Visit <http://www.radonc.utoronto.ca/before-you-start> to learn more about the unique features of our program!



Accept your Offer of Admission

Confirm your acceptance at <https://join.utoronto.ca> and submit your tuition deposit before the stated deadline (see your letter for details).



Prepare for September!

Visit <http://www.radonc.utoronto.ca/getting-started> for information about important dates and actions you'll need to take before classes start.